

COURSE INFORMATION

CHC30221 Certificate III in School Based Education Support
CHC40221 Certificate IV in School Based Education Support



1300 858 191

info@itac.edu.au

Unit 38, 12 Junction
Bvd. COCKBURN
CENTRAL WA 6164

RTO Code 52215
V4.0 December 2021

CONTENTS

3



Why choose us?

4



CHC30221 Certificate
III in School Based
Education Support

5



Details

6



Units

7



CHC40221 Certificate
IV in School Based
Education Support

8



Details

9



Units

10



Teacher Aide Combo

11



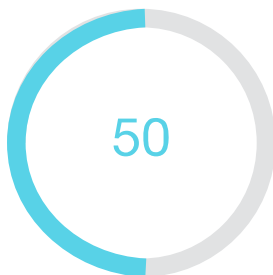
Details

12



About ITAC

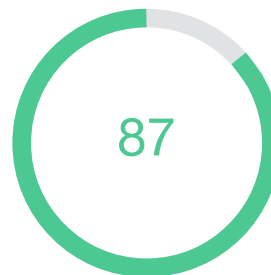
STATISTICS



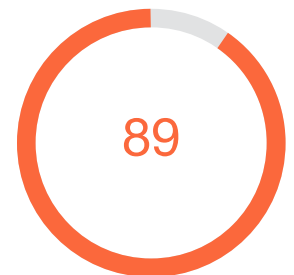
% CHOOSE ITAC
for CHC40221 Certificate
IV in School Based
Education Support



HAPPY GRADUATES



% COMPLETION RATE



% SATISFACTION
RATING

WHY CHOOSE US?



50% choose ITAC

For the CHC40221 Certificate IV in School Based Education Support.



PAYMENT PLANS FROM \$15

Interest free plans from \$15 - no hidden fees; includes all resources.



GOVERNMENT SUBSIDIES

Courses subsidised by the Queensland government.



INTEGRATED STRUCTURE

Australia's only integrated course structure means finishing sooner.



TEACHER AIDE COMBO

Australia's only true Teacher Aide Combo – saving time and money.



FREE LEARNER GUIDE

Free learner guides, live webinars, e-books and a library of lectures.



SUPPORT

Friendly trainers with years of experience in local schools.



PLACEMENT

We visit every learner on placement to help improve your practice.



30-DAY NO OBLIGATION

So you can be sure that the course is right for you.



MODES

Supported, self-paced online mode or class from 1 day per week.



RESEARCH-BASED CONTENT

Learn the best practice skills that schools now demand.



LINKS WITH INDUSTRY

Links with thousands of schools around Australia.

Ebony Springall - ITAC graduate and 2020 South Australian VET student of the year.



CHC30221 CERTIFICATE III IN SCHOOL BASED EDUCATION SUPPORT

Australia's most popular teacher aide course

The CHC30221 Certificate III in School Based Education Support is the introductory teacher aide course that covers all of the basics of working in a school under the direct supervision of a teacher. Most adult learners should enrol directly into the [Teacher Aide Combo](#) (most recommended) or the [CHC40221 Certificate IV in School Based Education Support](#) as more than 80% of positions require the higher-level qualification.

Key points about ITAC's CHC30221 Certificate III in School Based Education Support:

- An introductory course for working in a mainstream classroom under direct supervision.
- Generally does not involve supporting children with additional needs.
- Covers foundational classroom skills such as basic instructional strategies.
- [Assessments](#) based on short answer questions, quizzes and work-based tasks.
- Australia's only [Integrated structure](#) which means finishing sooner.
- Earn merit and other certificates to add to your resume.
- Links with thousands of schools across Australia.
- [Learner guides](#), live webinars, interactive e-learning modules all included.
- Mainly suitable for high school aged students or those who are learning to speak English.

Also unique to ITAC is our [research-based curriculum](#) which means learning many of the foundational skills that teachers learn at university. Because schools now expect support workers to have these skills, ITAC's courses have become the industry standard when it comes to teacher aide training in Australia. Don't risk your career with the second best - enrol with the go-to provider for teacher aide courses in Australia - ITAC.

Because schools now expect support workers to have these skills, ITAC's courses have become the industry standard when it comes to teacher aide training in Australia.

✚ CHC30221 CERTIFICATE III IN SCHOOL BASED EDUCATION SUPPORT



INTRODUCTORY COURSE

CHC30221 Certificate III in School Based Education Support

The introductory teacher aide course covering all the basics of working in a school.



HIGHER-LEVEL COURSE

CHC40221 Certificate IV in School Based Education Support

The industry standard TA course with a focus on disabilities and disorders.



TEACHER AIDE COMBO

Study two courses in one streamlined program.

Save time and money by completing ITAC's popular Teacher Aide Combo.



SAMPLE RESOURCES

Have a look at our range of sample course resources and materials

Be sure to ask your provider for a sample of their resources and assessments before enrolling.

INCLUDED IN THE COURSE

| | |
|------------------------------|---|
| INTEREST FREE PAYMENT PLANS | ✓ |
| 30-DAY NO OBLIGATION PERIOD | ✓ |
| FREE LEARNER GUIDE & E-BOOKS | ✓ |
| STUDY AT YOUR OWN PACE | ✓ |
| FRIENDLY LOCAL TRAINERS | ✓ |
| WEEKLY CATCH-UP WEBINARS | ✓ |
| GOVERNMENT SUBSIDIES IN QLD | ✓ |
| FREE SHORT COURSES | ✓ |
| LEARN RESEARCHBASED SKILLS | ✓ |
| UNLIMITED FRIENDLY SUPPORT | ✓ |
| HARDCOPY CERTIFICATE | ✓ |
| NO EXAMS, TESTS OR ESSAYS. | ✓ |

COURSE DETAILS: CHC30221 CERTIFICATE III IN SCHOOL BASED EDUCATION SUPPORT

-  **Qualification**
CHC30221 Certificate III in School Based Education Support
-  **Nationally recognised**
Yes.
-  **Locations**
Available Australia wide.
-  **Distance/online mode**
Structured, supported and flexible self-paced mode available Australia wide. See the flyer for distance/online mode [here](#).
-  **Class-based mode**
Available in Perth (Cockburn). Attend a series of 10 introductory workshops held 1 day per week, plus self-paced study at home. Workshops begin every school term. For class-based mode we recommend the [Teacher Aide Combo](#). See the class calendar [here](#). See the class-based flyer [here](#).
-  **Recognition of prior learning**
RPL is suitable for TAs with significant industry experience, current employment as a TA, and a history of ongoing professional development. See the RPL flyer [here](#).
-  **Time to complete**
A learner who has no experience with children or any previous study or employment history, may take 26 weeks or 600 hours to complete this program. Learners who have experience with children (including parents and carers), related 'people' industries such as childcare or aged care, or who have studied at this level or higher before, may complete this course in a shorter period of time.
-  **Enrolment period**
Learners are initially enrolled for 12 months. This allows for periods of illness, travel and other interruptions. ITAC is currently providing a free 4-month extension to all students due to COVID.
-  **Assessments**
Theory assessments are mainly short answer questions. Students complete work-based tasks while on placement such as a portfolio, scenarios and demonstrations. There are no exams or essays.
-  **Work placement**
This qualification requires all learners to complete a 100-hour placement in a local school (Pre-primary - Year 12).
-  **Topics**
Basic concepts such as hazards and risks, policies and procedures, building rapport and motivating students, basic teaching and learning concepts such as the 3Ps (pause, prompt, praise) and teaching phonics to small groups and individuals.
-  **Employability**
Graduates typically find work in a mainstream classroom setting.
-  **Certificate**
On completion you will be issued an embossed hardcopy certificate. Learners may also earn printable certificates for completed assessments and quizzes, as well as other awards e.g. Certificate of Merit.
-  **Government payments (Centrelink)**
Learners enrolled in this course may be eligible for government payments. See [Services Australia's website](#) for details.

UNITS OF COMPETENCY FOR THE CHC30221 CERTIFICATE III IN SCHOOL BASED EDUCATION SUPPORT

- **CHCDIV001** Work with diverse people
- **CHCEDS033** Meet legal and ethical obligations in an education support environment
- **CHCEDS034** Contribute to the planning and implementation of educational programs
- **CHCEDS035** Contribute to student education in all developmental domains
- **CHCEDS036** Support the development of literacy and oral language skills
- **CHCEDS037** Support the development of numeracy skills
- **CHCEDS057** Support students with additional needs in the classroom environment
- **CHCEDS059** Contribute to the health, safety and wellbeing of students
- **CHCEDS060** Work effectively with students and colleagues
- **CHCEDS061** Support responsible student behaviour
- **CHCEDS041** Set up and sustain learning areas
- **HLTWHS001** Participate in workplace health and safety
- **CHCEDS048** Work with students in need of additional learning support
- **CHCEDS047** Assist in facilitation of student learning
- **CHCEDS058** Support the implementation of behaviour plans



CHC40221 CERTIFICATE IV IN SCHOOL BASED EDUCATION SUPPORT

Australia's most popular teacher aide course

The CHC40221 Certificate IV in School Based Education Support is the standard teacher aide course that schools expect all new support staff to hold. This course has a focus on supporting the behaviour and learning of children with additional needs.

Key points about ITAC's CHC40221 Certificate IV in School Based Education Support:

- A higher-level course that qualifies graduates for almost every support position.
- Covers foundational classroom skills such as instructional strategies.
- Also covers knowledge of disabilities and disorders such as autism and dyslexia.
- [Assessments](#) based on short answer questions, quizzes and work-like tasks.
- Australia's only [Integrated structure](#) which means finishing sooner.
- Earn merit and other certificates to add to your resume.
- Links with thousands of schools across Australia.
- [Learner guides](#), live webinars, interactive e-learning modules all included.
- Structured and supportive online mode or class-based in WA.
- Adult learners should enrol directly into this course (or the Teacher Aide Combo) because more than 80% of positions involve supporting children with additional needs.
- Completion of this course often means a higher starting salary.

Also unique to ITAC is our [research-based curriculum](#) which means learning many of the foundational skills that teachers learn at university. Because schools now expect support workers to have these skills, ITAC's courses have become the industry standard when it comes to teacher aide training in Australia. Don't risk your career with the second best - enrol with the go-to provider for teacher aide courses in Australia - ITAC.

Because schools now expect support workers to have these skills, ITAC's courses have become the industry standard.

✚ CHC40221 CERTIFICATE IV IN SCHOOL BASED EDUCATION SUPPORT



INTRODUCTORY COURSE

CHC30221 Certificate III in School Based Education Support

The introductory teacher aide course covering all the basics of working in a school.



HIGHER-LEVEL COURSE

CHC40221 Certificate IV in School Based Education Support

The industry standard TA course with a focus on disabilities and disorders.



TEACHER AIDE COMBO

Study two courses in one streamlined program.

Save time and money by completing ITAC's popular Teacher Aide Combo.



SAMPLE RESOURCES

Have a look at our range of sample course resources and materials

Be sure to ask your provider for a sample of their resources and assessments before enrolling.

INCLUDED IN THE COURSE

| | |
|------------------------------|---|
| INTEREST FREE PAYMENT PLANS | ✓ |
| 30-DAY NO OBLIGATION PERIOD | ✓ |
| FREE LEARNER GUIDE & E-BOOKS | ✓ |
| STUDY AT YOUR OWN PACE | ✓ |
| FRIENDLY LOCAL TRAINERS | ✓ |
| WEEKLY CATCH-UP WEBINARS | ✓ |
| GOVERNMENT SUBSIDIES IN QLD | ✓ |
| FREE SHORT COURSES | ✓ |
| LEARN RESEARCHBASED SKILLS | ✓ |
| UNLIMITED FRIENDLY SUPPORT | ✓ |
| HARDCOPY CERTIFICATE | ✓ |
| NO EXAMS, TESTS OR ESSAYS. | ✓ |

COURSE DETAILS: CHC40221

CERTIFICATE IV IN SCHOOL BASED EDUCATION SUPPORT

- **Qualification**

CHC40221 Certificate IV in School Based Education Support
- **Nationally recognised**

Yes.
- **Locations**

Available Australia wide.
- **Distance/online mode**

Structured, supported and flexible self-paced mode available Australia wide. See the flyer for distance/online mode [here](#).
- **Class-based mode**

Available in Perth (Cockburn). Attend a series of 10 introductory workshops held 1 day per week, plus self-paced study at home. Workshops begin every school term. For class-based mode we recommend the [Teacher Aide Combo](#). See the class calendar [here](#). See the class-based flyer [here](#).
- **Recognition of prior learning**

RPL is suitable for TAs with significant industry experience, current employment as a TA, and a history of ongoing professional development. See the RPL flyer [here](#).
- **Time to complete**

A learner who has no experience with children or any previous study or employment history, may take 26 weeks or 600 hours to complete this program. Learners who have experience with children (including parents and carers), related 'people' industries such as childcare or aged care, or who have studied at this level or higher before, may complete this course in a shorter period of time.
- **Enrolment period**

Learners are initially enrolled for 12 months. This allows for periods of illness, travel and other interruptions. ITAC is currently providing a free 4-month extension to all students due to COVID.
- **Assessments**

Theory assessments are mainly short answer questions. Students complete work-based tasks while on placement such as a portfolio, scenarios and demonstrations. There are no exams or essays.
- **Work placement**

This qualification requires all learners to complete a 100-hour placement in a local school (Pre-primary - Year 12).
- **Topics**

Students study a range of best practice strategies and learn to apply them with students with additional needs particularly autism, intellectual disability and ADHD. Students study research-based behavioural and instructional techniques such as explicit instruction and systematic prompting. Students are exposed to several advanced concepts such as the zone of proximal development.
- **Employability**

Graduates of this course are qualified to work in any TA role including schools or centres for students with additional needs, or other specialist programs.
- **Certificate**

On completion you will be issued an embossed hardcopy certificate. Learners may also earn printable certificates for completed assessments and quizzes, as well as other awards e.g. Certificate of Merit.
- **Government payments (Centrelink)**

Learners enrolled in this course may be eligible for government payments. See [Services Australia's website](#) for details.

UNITS OF COMPETENCY

- **CHCDIV001** Work with diverse people
- **CHCECE054** Encourage understanding of Aboriginal and/or Torres Strait Islander peoples' cultures
- **CHCEDS033** Meet legal and ethical obligations in an education environment
- **CHCEDS045** Support student mathematics learning
- **CHCEDS046** Support student literacy learning
- **CHCEDS047** Assist in facilitation of student learning
- **CHCEDS048** Work with students in need of additional learning support
- **CHCEDS051** Facilitate learning for students with disabilities
- **CHCEDS056** Provide support to students with autism spectrum disorder
- **CHCEDS058** Support the implementation of behaviour plans
- **CHCEDS059** Contribute to the health, safety and wellbeing of students
- **CHCPRP003** Reflect on and improve own professional practice
- **CHCPRT001** Identify and respond to children and young people at risk
- **CHCDIS009** Facilitate ongoing skills development using a person-centred approach
- **HLTWHS001** Participate in workplace health and safety
- **CHCEDS036** Support the development of literacy and oral language skills
- **CHCEDS061** Support responsible student behaviour



ITAC'S UNIQUE TEACHER AIDE COMBO

Australia's most popular teacher aide course

While the Certificate III qualifies students to work in a mainstream classroom and the Certificate IV to work with children with additional needs, the Teacher Aide Combo enables you to work in both. Finish sooner by enrolling in Australia's only true Teacher Aide Combo thanks to ITAC's unique [integrated course design](#).

Key points about ITAC's Teacher Aide Combo:

- Australia's only [true teacher aide combo](#).
- [Integrated structure](#) means finishing sooner while learning the same content.
- Takes not much longer than a single course.
- Save almost \$1600 compared to completing two separate courses.
- Learn everything from both nationally recognised teacher aide courses.
- Boost your resume, confidence, skills and employability.
- [Assessments](#) based on short answer questions, quizzes and work-like tasks.
- Earn merit and other certificates to add to your resume.
- Links with thousands of schools across Australia.
- [Learner guides](#), live webinars, interactive e-learning modules all included.
- Structured and supportive online mode or class-based in WA.
- Completion of this course often means a higher starting salary.

Also unique to ITAC is our [research-based curriculum](#) which means learning many of the foundational skills that teachers learn at university. Because schools now expect support workers to have these skills, ITAC's courses have become the industry standard. Don't risk your career with the second best - enrol with the go-to provider for teacher aide courses in Australia - ITAC.

Because schools now expect staff to have these skills, ITAC's courses have become the industry standard.

✚ RESEARCH-BASED, BEST PRACTICE TEACHER AIDE COURSES



INTRODUCTORY COURSE

CHC30221 Certificate III in School Based Education Support

The introductory teacher aide course covering all the basics of working in a school.



HIGHER-LEVEL COURSE

CHC40221 Certificate IV in School Based Education Support

The industry standard TA course with a focus on disabilities and disorders.



TEACHER AIDE COMBO

Study two courses in one streamlined program.

Save time and money by completing ITAC's popular Teacher Aide Combo.



SAMPLE RESOURCES

Have a look at our range of sample course resources and materials

Be sure to ask your provider for a sample of their resources and assessments before enrolling.

INCLUDED IN THE COURSE

| | |
|------------------------------|---|
| SAVE AN AMAZING \$2100 | ✓ |
| INTEREST FREE PAYMENT PLANS | ✓ |
| 30-DAY NO OBLIGATION PERIOD | ✓ |
| FREE LEARNER GUIDE & E-BOOKS | ✓ |
| STUDY AT YOUR OWN PACE | ✓ |
| FRIENDLY LOCAL TRAINERS | ✓ |
| WEEKLY CATCH-UP WEBINARS | ✓ |
| NO ADDITIONAL OR HIDDEN FEES | ✓ |
| FREE SHORT COURSES | ✓ |
| LEARN RESEARCHBASED SKILLS | ✓ |
| UNLIMITED FRIENDLY SUPPORT | ✓ |
| HARCOPY CERTIFICATE | ✓ |

COURSE DETAILS: THE ORIGINAL TEACHER AIDE COMBO

-  **Qualification**
CHC30221 Certificate III in School Based Education Support & CHC40221 Certificate IV in School Based Education Support
-  **Nationally recognised**
Yes.
-  **Locations**
Available Australia wide.
-  **Distance/online mode**
Structured, supported and flexible self-paced mode available Australia wide.
-  **Class-based mode**
Available in Perth (Cockburn). Attend a series of 10 introductory workshops held 1 day per week, plus self-paced study at home. Workshops begin every school term. See the class calendar [here](#). See the class-based flyer [here](#).
-  **Recognition of prior learning**
RPL is suitable for TAs with significant industry experience, current employment as a TA, and a history of ongoing professional development. See the RPL flyer [here](#).
-  **Time to complete**
A learner who has no experience with children or any previous study or employment history, may take 26 weeks or 600 hours to complete this program. Learners who have experience with children (including parents and carers), related 'people' industries such as childcare or aged care, or who have studied at this level or higher before, may complete this course in a shorter period of time.
-  **Enrolment period**
Learners are initially enrolled for 12 months. This allows for periods of illness, travel and other interruptions. ITAC is currently providing a free 4-month extension to all students due to COVID.
-  **Assessments**
Theory assessments are mainly short answer questions. Students complete work-based tasks while on placement such as a portfolio, scenarios and demonstrations. There are no exams or essays.
-  **Work placement**
This qualification requires all learners to complete a 100-hour placement in a local school (Pre-primary - Year 12).
-  **Topics**
Students learn everything from the CHC30221 and the CHC40221. This includes basic and advanced behaviour management techniques, support strategies for students with disabilities and disorders, a range of best practice teaching strategies, and operational and logistic tasks expected of teacher aides at this level. Students also learn more advanced concepts such teaching metacognitive skills.
-  **Employability**
Graduates of this course are qualified to work in any TA role including schools or centres for students with additional needs, or other specialist programs.
-  **Certificate**
On completion you will be issued an embossed hardcopy certificate. Learners may also earn printable certificates for completed assessments and quizzes, as well as other awards e.g. Certificate of Merit.
-  **Government payments (Centrelink)**
Learners enrolled in this course may be eligible for government payments. See [Services Australia's website](#) for details.

ABOUT ITAC

Welcome to the home of Australia's most popular teacher aide course. The Institute of Teacher Aide Courses (ITAC) is the pre-eminent and leading provider of nationally recognised teacher aide courses in Australia. ITAC is a specialist provider delivering research-based, best practice skills. Here's a few quick facts about ITAC:

- ITAC has links with thousands of schools across Australia.
- ITAC offers the only [integrated teacher aide course](#) in Australia.
- ITAC is the only provider in Australia offering a 'true' [Teacher Aide Combo](#).
- ITAC is the only provider in Australia teaching a [research-based curriculum](#).
- ITAC is an [award winning provider](#) - our students have also won several awards.
- ITAC's completion rate is 3x the national average according to the NCVER.
- More than 50% of students choose ITAC for the CHC40221 Certificate IV in Education Support.
- ITAC has hundreds of positive reviews with a 4.7 star rating on [Google](#) and 4.9 on [Facebook](#).
- ITAC provide students with interest free payment plans and a 30-day no obligation period.
- ITAC's courses come with free learner guides, e-books, short courses, and live webinars.
- ITAC's expert trainers develop all [course materials in-house](#).
- ITAC's trainers are registered schoolteachers - many with high-level qualifications.
- ITAC's students can earn certificates throughout their course to boost their resume.
- ITAC's [assessments](#) are mainly short-answer questions, quizzes and workplace tasks.
- ITAC have published several [#1 best-selling books](#).
- ITAC's CEO is an advisor to government on teacher aide qualifications.

For these and many other reasons, ITAC's courses have become the standard when it comes to teacher aide training in Australia.





TEACHER AIDE COMBO

CHC30221 Certificate III in School Based Education Support
CHC40221 Certificate IV in School Based Education Support
Teacher Aide Combo

COMBINING BOTH COURSES TO SAVE YOU TIME AND MONEY.



What is the Teacher Aide Combo? ITAC's popular [Teacher Aide Combo](#) is a streamlined program that combines both nationally recognised teacher aide qualifications into one cost effective course. In fact, students save \$2100 compared to completing both qualifications separately. ITAC offer Australia's [only true Teacher Aide Combo](#) – instead of studying 32 units (15 from Cert III and 17 from Cert IV) students complete four work-like modules. Holding both qualifications means students are highly skilled, confident in their abilities, and very employable.



Does the Teacher Aide Combo save time?

Absolutely it does. Because ITAC's courses are developed using an [integrated course structure](#), students finish many months earlier compared to a unit-by-unit course. In fact, some students finish 6-9 months sooner while still learning the exact same content. Why? An integrated course structure means a significant amount of duplication is deleted. This saves students time and money, but also means they can focus on the core skills that will make them a highly effective support worker.



Besides saving time and money, are there any other benefits?

Yes, there are several key benefits to completing the Teacher Aide Combo. First, the Certificate III is designed for working in a mainstream class and the Certificate IV is for working with students with special needs (e.g. autism). Completing both means you are qualified to work in any support position in any Australian school. Second, students learn more in the Teacher Aide Combo than if they completed two separate courses. This means more confidence, higher job satisfaction and more opportunities. Third, having two certificates on your resume (and to show on job interviews) gives our graduates a leg up in the job market.

Is the Teacher Aide Combo popular? Yes – it is our most popular program. In fact, almost all students enrol in the Teacher Aide Combo. Schools prefer students who hold both the Cert III and the Cert IV, and who have studied a research-based course.

Does the Teacher Aide Combo require extra work? The difference between the Cert IV and the Teacher Aide Combo is minimal in terms of the number of hours required overall. We advise students that the Teacher Aide Combo is about 10% more 'work', however this 10% is valuable in terms of the skills and knowledge that students gain. As ITAC's courses have become the industry standard in teacher aide training in Australia, schools know that the Teacher Aide Combo means better skilled staff and therefore, better outcomes for children.

Are classes available for the Teacher Aide Combo? Classes are available in Western Australia and begin 8 times per year. We also run weekly live webinars for online students as well as tutorials in certain areas. See the [class calendar](#) for details.

What are the assessments like in the Teacher Aide Combo? Assessments in the Teacher Aide Combo are similar to the [CHC40221 Certificate IV in School Based Education Support](#) in terms of the level of knowledge and skills expected of students. Students complete short answer questions, a work portfolio and a workplace demonstration.





CLASS BASED MODE

CHC30221 Certificate III in School Based Education Support
CHC40221 Certificate IV in School Based Education Support
Teacher Aide Combo

WEEKLY WORKSHOPS IN A FRIENDLY &
SUPPORTIVE ENVIRONMENT.



Why enrol in class-based mode? Many students enjoy the social aspects of being in class, the opportunity to ask questions, the weekly structure and routine that it provides, and the opportunity to spend the day concentrating on their course without the usual distractions. The completion rate for students who attend classes is slightly higher than our distance or online mode of study. Class-based students also tend to complete their program a little faster.



How is the course structured? ITAC classes can be described as a series of workshops. Each workshop introduces students to a main topic from their course. Classes are held once a week during family-friendly hours, so students have time to drop off and pick up kids from school. The class covers a different topic each week such as safety, literacy, numeracy, and behaviour management. Most of the course is completed at home on non-contact days by logging into the student portal.

What can I expect during the class? The atmosphere of classes is friendly, supportive, and adult orientated. Classes typically comprise a combination of trainer-led lectures, discussions, practical activities, individual practice, pair and group work, as well as activities specific to the topic of the day. Each class is packed with useful and engaging activities that lead to the achievement of specific learning goals. Students also work on their assessments and interact with other students during breaks. Free tea and coffee is provided.



How much time do I need to study each week? The course is designed to be completed in 26 weeks or over a longer time period for part-time students or those with additional needs. Most students study between 10 and 25 hours per week including classes, tutorials, webinars, online lectures, readings, placement, and assessment activities. As the course is largely self-paced, students can choose how much time they dedicate to their studies each week.

What activities am I required to complete outside of class? The course is structured in an easy to follow, user-friendly manner. Students regularly access their online portal in order to watch videos and lectures, attend live webinars, read learner guides and other materials, and complete a range of interactive activities to complement their learning. Once the learning portion of a cluster is complete, students can begin the relevant assessment. The placement is completed towards the end of the course in a local school.

Does it cost more to attend classes? Class-based students pay a small Resources, Booking and Amenities fee to cover the cost of additional cleaning, resources and refreshments. This fee includes a hardcopy Learner Guide.

What is the difference between class-based mode and distance/online mode? Class-based students complete same activities and online students and follow the same structure. All students complete the same assessments and everyone has full access to ITAC's high quality resources such as interactive e-learning modules, our library of lectures, and supplementary readings to expand their knowledge.

I am an online student. Can I attend one or more classes? Yes.

However, please speak with your trainer first to ensure there are spaces available. Also note that we hold regular live webinars and face-to-face tutorials, and both are absolutely free of charge. Attend as many as you can – the more the better. Our students can also access our pre-recorded lectures and videos.



What time do classes start and end? Classes start at 9.30 and finish at 2.15. This is because many of our students are mothers who need to drop off and pick up children from school. Students can arrive earlier or stay later if they need some extra help from their trainer.



ONLINE MODE

CHC30221 Certificate III in School Based Education Support
CHC40221 Certificate IV in School Based Education Support
Teacher Aide Combo

STRUCTURED AND SUPPORTED STUDY FROM
THE COMFORT OF YOUR OWN HOME



1 What is online mode?

Online mode means there is no requirement to physically attend any face-to-face classes. In today's technologically enabled world however, good online courses involve weekly catch-up webinars, interactive e-learning modules, high quality resources, trainers available via phone or email, and an easy-to-use online learning platform. It also involves watching pre-recorded lectures as if you were right there in the room. While some providers think 'online' means sending the student a bunch of pdfs to read, ITAC students receive top level support and research-based training which results in high graduate employability.

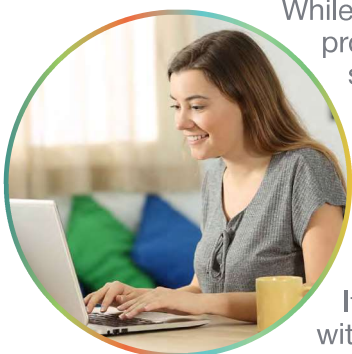


2 Do I still complete a placement?

All students, regardless of their provider, have to show evidence of completing 100 hours (about 16 days) in a registered Australian school. The placement can be completed from as little as 1 day per week, however most students volunteer 2 or 3 days per week. The best thing about the placement is that many students find work at the school where they volunteer.

3 What support do I get as an online student?

While many providers advertise support – few offer the services that ITAC actually provide. First, all of ITAC's trainers have many years of experience in local schools – they know the industry like no one else and can be contacted at any stage. Second, students can attend weekly live webinars in order to meet other students and ask questions. We even do tutorials in some areas. Students also watch pre-recorded lectures and complete interactive e-learning modules.



4 Is online mode popular?

It sure is. About 90% of students enrol in online mode (not just with ITAC – with all providers). In fact, we estimate that number to grow to more than 96% in coming years. Interestingly, about 10 years ago the number of online students was equal to the number of class-based students – not anymore! For busy adult learners, online mode is the only way that they can study. This is certainly the case for those who have work and family commitments.

5 Why is online popular?

As you may have already suspected – online mode is the ultimate in terms of flexibility. It means you can study when, where and for as long as is convenient for you. Study 10 hours this week, 20 hours the next, and nothing the week after. Study when the kids go to sleep at night; read your learner guide at the beach; watch a lecture on the train or bus – all while receiving top quality support from former schoolteachers who know what schools now expect.

6 What activities do I complete each week?

ITAC students work through a structured process designed by industry experts with decades of experience in local schools. Students read ITAC's internationally best-selling learner guide, watch pre-recorded lectures, attend live webinars, correspond with their friendly trainers if needed, work through fun e-learning modules and complete their theory assessments online. There are no essays, tests or exams.

7 How much time do I need to study each week?

ITAC's courses take around 600 hours, however most adult learners move through their course much faster (especially those with experience with children, who have studied before, or who have worked in similar 'caring' industries such as aged care). We advise students that the sweet spot seems to be around 15 hours per week in terms of moving through the course at a steady pace while maintaining motivation. An extra effort is recommended in the first 3 months or so. Of course, our online programs are self-paced and flexible so students can study more or fewer hours per week depending on their commitments.





RECOGNITION OF PRIOR LEARNING

CHC30221 Certificate III in School Based Education Support
CHC40221 Certificate IV in School Based Education Support
Teacher Aide Combo

DEMONSTRATE EXISTING SKILLS AND KNOWLEDGE
TO GAIN A QUALIFICATION.



What is RPL?

RPL is the mechanism by which experienced individuals can be granted a nationally recognised qualification without having to complete a standard course of study (a sequence of learning activities followed by assessments). This saves time, money and stress because the person doesn't have to 'learn' what they already know. The training provider puts together a process that enables the individual to easily provide evidence of their capabilities, usually in a way that relates to their current employment. This evidence is considered against the requirements of each unit of competency and, if met, a qualification is awarded.



Am I eligible for RPL?

As a general rule, candidates need to have at least 5 years of full-time experience in an Australian school as a teacher aide. They also need to be currently employed as a teacher aide. Candidates should also have completed a number of PDs and preferably at least one other nationally recognised qualification at Certificate III level or higher (even if in a different field).



How long does RPL take and what's involved?

The entire process takes about 8 hours in total but it's usually completed over a period of a month or so. Students attend an interview (usually by phone), put together a small portfolio, collect two reference letters, complete a workplace demonstration, as well as a few other simple tasks.

How do I enrol in RPL?

The first step is to contact ITAC to discuss your eligibility. As all students have different work and professional experiences, we need to confirm that RPL is the best program for you. The next step is to complete our online enrolment form and to provide evidence of your eligibility e.g. a resume, pay slips. From there, we will call you for a friendly chat and to discuss the process.

Is there an Assessment Only option?

In some instances we suggest that students complete an AOP (Assessment Only Pathway). This refers to a situation in which the candidate opts to complete the same assessments that a full course student would complete (kind of like skipping to the final exam). Whether the candidate undertakes an AOP or standard RPL process depends on several factors which the trainer will discuss with the candidate. In general, most students complete the standard RPL process as it is quicker and easier.






What is an accelerated program?

In some cases an experienced worker may not be suitable or confident enough to enrol in RPL even though they know most of the required content from the standard course. An accelerated program will enable the student to access all of ITAC's learner resources so they can re-fresh their skills and fill any gaps in their knowledge. They can work through these resources at a pace that matches their capabilities – finishing some sections in minutes (a quick refresher) but spending additional time in other areas (gap training). Also, students in an accelerated program can take up to 12 months to work through the course whereas RPL students have 6 months.





Research - based, best practice **TEACHER AIDE COURSES**

-  Based on [Australian and international research](#) from the last 50 years
-  Aligned with trending programs such as Positive Behaviour Support
-  Includes key elements from the Australian Professional Standards for Teachers
-  Guides, e-books and lectures developed by experienced teachers and teacher aides
-  Become your school's most valuable teacher aide by learning international best practices

Learn hundreds of techniques and strategies that you will only study at ITAC:

- 3Ps (pause, prompt, praise)
- Systematic prompting
- Simultaneous prompting
- Least-to-most prompting
- Withholding for self-repair
- Questioning skills
- Bloom's taxonomy
- Chunking
- Modelling
- Shared/guided learning
- Scaffolding (principles of)
- Fading
- Concept understanding
- Explicit instruction
- Formative evaluation
- Building on existing knowledge
- Think-alouds
- Graphic organisers
- Metacognition
- Motivational strategies
- 'Overlearning'
- The Zone of Proximal Development
- Cognitive load theory
- Learning styles
- Reflective practice
- Active listening
- Trauma informed care
- Person-centred care
- Planned interventions
- Situational awareness
- Low-key responses
- Proximity and positioning
- Minimal necessary force
- Selective ignoring
- Rapport building
- Setting expectations
- Tone and volume
- Establishing routines
- Peer prompting
- Re-direction
- Pre-corrections
- Choice method
- Antecedents and triggers
- Task avoiders
- Supervision strategies

At ITAC, we base our teacher aide courses around the best practice strategies, skills and techniques used by high-performing teachers, teacher aides, schools and governments around the world:

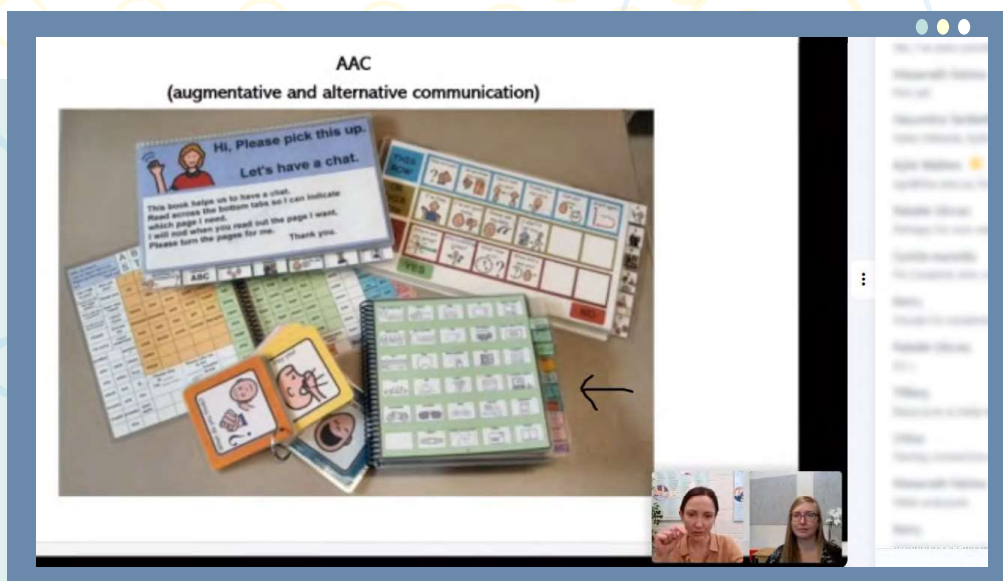
- Traditional, tried and tested strategies such as scaffolding, modelling, rapport building, textbook learning, and goal setting.
- Modern approaches such as cooperative learning, play-based learning, online learning, technology learning, blended learning, and cross-curriculum learning.
- Advanced and lesser-known strategies such as cognitive load theory, serial-position effects, the self-fulfilling prophecy, the zone of proximal development, and flipped learning.
- Literacy strategies such as phonics, active reading, pre and post-reading tasks, graphic organisers, using cues and prediction, spelling and grammar supports, modelling, guided and shared learning, and critical literacies, to name just a few.
- Generic skills that all high-performing teachers and teacher aides need to know such as motivational skills, reflective practice, and games.
- Transferable skills and life-long strategies such as study skills, transferable skills, metacognitive skills, coping skills, mental scripting, and many others.
- Physical and hands-on skills' development strategies such as deliberate practice, over-learning, spaced learning, and massed practice.
- Strategies to support students with special needs such as assistive technology, intervention and targeting approaches, remedial instruction, social stories, teaching aids and props, and differentiated instructions.
- Student-centred strategies such as learning by failure, self-directed learning, pair and group work, debating, discussions, and role plays.
- Teacher-centered strategies such as team teaching, explicit instruction, and scaffolding.
- Strategies and approaches to support the operational needs of the classroom such as methods for planning learning sequences, behaviour systems, and using data for continual improvement.
- Proactive behaviour management skills and techniques such as developing systems, identifying the root cause, and collecting and using data.
- Reactive behaviour management skills and techniques such as positioning, the ripple effect, noise control, signal to begin, low-key responses, and many more.

LIVE AND PRE-RECORDED WEBINARS

Delivered weekly by expert
trainers with decades of
experience in local schools

Highlights:

- Held weekly (excluding school holidays)
- 30-45 minutes depending on the topic
- Covering topics from your course and many others
- Included in your course fee – attend as many as you like
- Learn research-based best practice and how it applies to your work
- Ask questions, listen to anecdotes, keep on track, finish sooner
- Download pre-recorded webinars and listen or watch when and where you like
- Choose from our extensive collection of videos
- Complements and enhances your theoretical and practical skills



HOW TO CHOOSE A TRAINING PROVIDER



Because choosing a provider is somewhat difficult, we've put together a few questions to help you select the best provider for your needs. This advice applies to most nationally recognised courses in Australia whether it be IT, aged care, childcare, business, mining or any other course. These questions are something of a checklist for when researching potential providers.

In no particular order of importance, here are the questions you should ask:

- ☐ 1. What is the total and true cost of the course?
.....
- ☐ 2. Does the provider run classes?
.....
- ☐ 3. Does the provider offer regular webinars?
.....
- ☐ 4. How many trainers does the provider employ specifically for this course?
.....
- ☐ 5. Is the provider a specialist in their field?
.....
- ☐ 6. Does the provider use an integrated course structure?
.....
- ☐ 7. If enrolling in a dual or combo course, is it a true 'combo'?
.....
- ☐ 8. Does the provider use a research-based curriculum?
.....
- ☐ 9. Does the provider visit each student on placement?
.....
- ☐ 10. Is the provider well-known and reputable?
.....
- ☐ 11. Who is your trainer going to be?
.....
- ☐ 12. Does the provider develop their own resources?
.....
- ☐ 13. How long has the provider been around for?
.....
- ☐ 14. Is the CEO an industry expert?
.....
- ☐ 15. Has the provider been sanctioned by the VET regulator?
.....